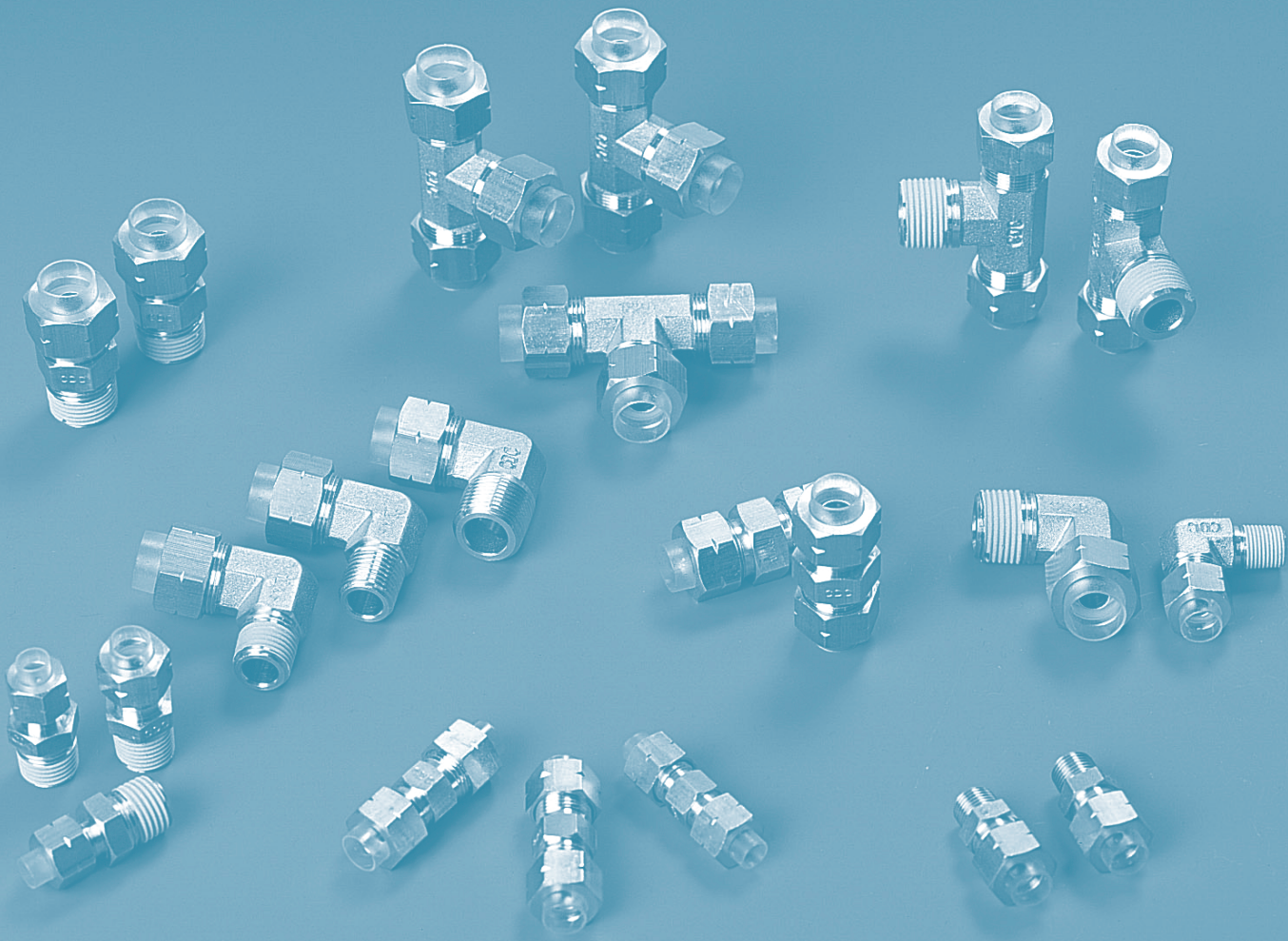


# Two-Touch Fittings BSBM



- One-Touch Fittings
- Compact One-Touch Fittings
- Speed Controllers
- Hand Valves
- Stop Fittings
- Check Valves
- Two-Touch Fittings
- Two-Touch Fittings BSBM

## Two Touch Fitting BSBM

**CC**  
Page 198



**CL**  
Page 199



**CT**  
Page 200



**CUC**  
Page 201



**CUL**  
Page 201



**CUT**  
Page 202



**CSN**  
Page 203



**NUT**  
Page 203



## Applications

- Screw joining fitting with large maintenance power and easy release and connection in limited piping spaces.
- Convenient to use in place with a lot of impact and vibration.

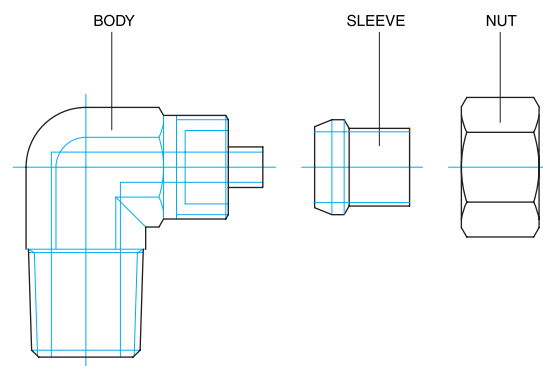
## Features

- Attached insert allows tolerance to pressure and vibration.
- Two-touch type fitting fixes the tube more firmly.
- Efficient for piping due to coating at the screw section.

## Specifications

- Fluid type : Air, Oil, Water
- Working pressure : 0~150PSI / 0~9.9Kgf/cm<sup>2</sup> (0~990KPa).
- Negative pressure : -750mmHg(-750Torr)
- Working temperature
  - Air: -40°C ~ +80°C
  - Water : 0°C ~ +70°C
  - Oil: -40°C ~ +80°C

## Structural Diagram



## CAUTION

- Be sure to refer to the Caution on Safety, Classification of Warning Indication (P7), and Common Caution of Fitting Products (P8) before use.
- Assemble the fitting according to the proper connection torque value (P7).
- The proper torque refers to connection by hand and 2~3 rotations by a tool. Excessive pressure may damage the screw.
- Use the product after cleaning the surface of the inserting section of tube.
- The sleeve of this product cannot be reused, so that it should be replaced after 1 (one) use.

## WARNING

- Don't use re-treated or modified products.
- Avoid piping under tension, and also avoid high curvature piping at the tube insertion section of the fitting.
- Do not use the product in environments containing flammable and corrosive gases.
- Do not let the fluid contact the tube and fitting when the fluid is hot. It may cause bodily harm.

## Product Code System

### METRIC - BSPT(R)

**CC 6 × 4 - 01**

Two Touch Fitting BSBM

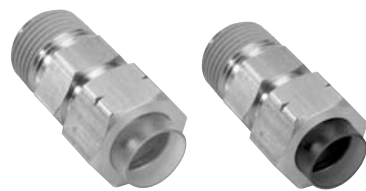
Tube Dia

Thread Size

CODE	OD	ID	R(PT) THREAD
4×2	φ4	φ2	01 R1/8
4×2.5	φ4	φ2.5	02 R1/4
6×4	φ6	φ4	03 R3/8
8×5	φ8	φ5	04 R1/2
8×5.5	φ8	φ5.5	
8×6	φ8	φ6	
10×6.5	φ10	φ6.5	
10×8	φ10	φ8	
12×8	φ12	φ8	
12×9	φ12	φ9	
16×12	φ16	φ12	
16×13	φ16	φ13	

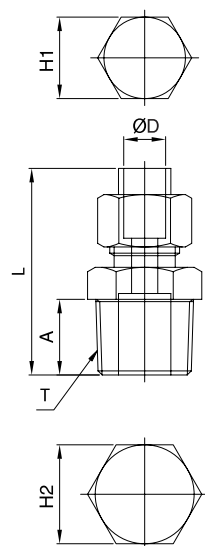
# Two Touch Fitting BSBM

## CC



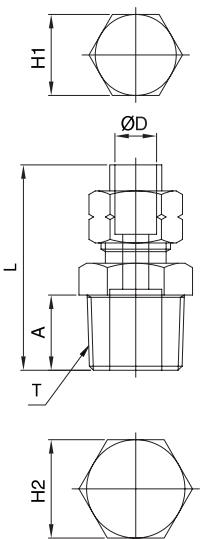
### METRIC-BSPT(R)

MODEL	ØD	T	L	A	H1(Hex)	H2(Hex)	ORIFICE	WEIGHT(g)	BOX(EA)
CC 4×2-01	4	R 1/8	28.7	8.0	10	10	1.0	11.3	100
CC 4×2-02		R 1/4	33.6	12.0	10	14	1.0	20.2	100
CC 6×4-01	6	R 1/8	29.3	8.0	10	10	2.5	13.5	100
CC 6×4-02		R 1/4	33.7	12.0	12	14	2.5	21.8	100
CC 6×4-03	R 3/8	34.8	13.0	17	17	17	31.1	50	
CC 8×5-01	8	R 1/8	29.9	8.0	12	12	3.5	16.6	100
CC 8×5-02		R 1/4	34.5	12.0	14	14	3.5	23.7	100
CC 8×5-03	R 3/8	35.5	13.0	17	17	17	32.7	50	
CC 8×6-01	8	R 1/8	30.2	8.0	12	12	4.5	16.6	100
CC 8×6-02		R 1/4	34.6	12.0	14	14	4.5	23.4	100
CC 8×6-03	R 3/8	36.0	13.0	17	17	17	34.0	50	
CC 10×6.5-02	10	R 1/4	35.5	12.0	15	15	5.0	32.0	50
CC 10×6.5-03		R 3/8	37.0	13.0	17	17	5.0	38.5	50
CC 10×6.5-04	R 1/2	41.0	15.0	22	22	22	60.0	25	
CC 10×8-02	10	R 1/4	35.6	12.0	15	15	6.5	28.7	50
CC 10×8-03		R 3/8	37.3	13.0	17	17	6.5	38.5	50
CC 10×8-04	R 1/2	41.3	15.0	22	22	22	59.1	25	
CC 12×8-02	12	R 1/4	36.5	12.0	17	17	6.5	34.0	50
CC 12×8-03		R 3/8	40.6	13.0	19	19	6.5	45.2	50
CC 12×8-04	R 1/2	42.5	15.0	22	22	22	60.9	25	
CC 12×9-02	12	R 1/4	36.6	12.0	17	17	7.5	34.3	50
CC 12×9-03		R 3/8	40.5	13.0	19	19	7.5	39.0	50
CC 12×9-04	R 1/2	42.6	15.0	22	22	22	60.2	25	
CC 16×12-03	16	R 3/8	46.5	13.0	22	22	10.0	83.3	25
CC 16×12-04		R 1/2	49.0	15.0	27	27	10.0	96.3	20
CC 16×13-03		R 3/8	46.5	13.0	22	22	10.0	81.2	25
CC 16×13-04	R 1/2	49.0	15.0	22	22	10.0	95.2	20	



### INCH-BSPT(R)

MODEL	ØD	T	L	A	H1(Hex)	H2(Hex)	ORIFICE	WEIGHT(g)	BOX(EA)
CC 3/16-01	3/16	R 1/8	29.4	8.0	10	10	2.4	13.0	100
CC 3/16-02		R 1/4	33.4	12.0	10	14	2.4	20.0	100
CC 1/4-01	1/4	R 1/8	29.4	8.0	10	10	3.4	14.0	100
CC 1/4-02		R 1/4	33.4	12.0	12	14	3.4	22.0	100
CC 1/4-03	R 3/8	34.4	13.0	17	17	17	31.0	50	
CC 5/16-01	5/16	R 1/8	29.4	8.0	12	12	4.7	17.0	100
CC 5/16-02		R 1/4	33.4	12.0	14	14	4.7	24.0	100
CC 5/16-03	R 3/8	34.4	13.0	17	17	17	33.0	50	
CC 3/8-01	3/8	R 1/8	30.4	8.0	14	14	5.7	23.0	100
CC 3/8-02		R 1/4	34.4	12.0	14	14	5.7	28.0	50
CC 3/8-03	R 3/8	35.4	13.0	17	17	5.7	39.0	50	
CC 3/8-04	R 1/4	41.4	15.0	22	22	22	68.0	25	
CC 1/2-02	1/2	R 1/4	35.4	12.0	17	17	8.2	33.0	50
CC 1/2-03		R 3/8	36.4	13.0	19	19	8.2	40.0	50
CC 1/2-04	R 1/2	41.4	15.0	22	22	22	72.0	25	

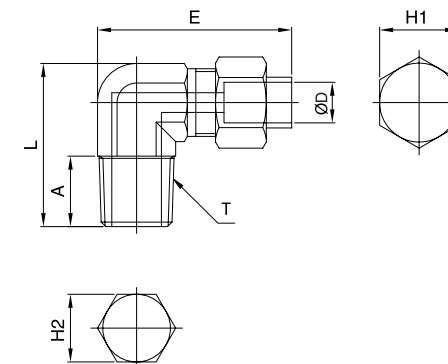


## CL



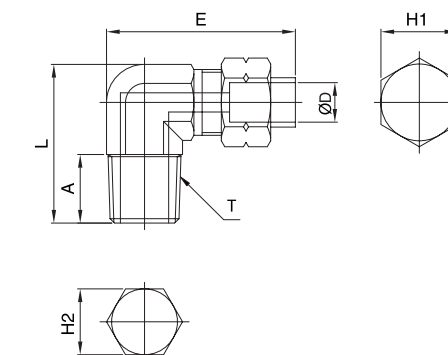
### METRIC-BSPT(R)

MODEL	ØD	T	L	E	A	H1(Hex)	H2(Hex)	ORIFICE	WEIGHT(g)	BOX(EA)
CL 4×2-01	4	R 1/8	23.8	29.4	12.0	10	10	1.0	19.5	100
CL 4×2-02		R 1/4	28.9	32.4	12.5	10	12	1.0	26.5	100
CL 6×4-01	6	R 1/8	23.8	28.8	12.0	12	10	2.5	21.3	100
CL 6×4-02		R 1/4	28.9	33.0	12.5	12	12	2.5	28.6	50
CL 6×4-03	R 3/8	34.1	34.1	13.5	14	14	14	30.0	50	
CL 8×5-01	8	R 1/8	27.9	34.2	12.0	12	12	3.5	28.8	50
CL 8×5-02		R 1/4	28.9	33.9	12.5	14	12	3.5	30.3	50
CL 8×5-03	R 3/8	34.1	36.0	13.0	14	14	14	33.0	50	
CL 8×6-01	8	R 1/8	27.9	33.8	12.0	12	12	4.5	28.4	50
CL 8×6-02		R 1/4	28.9	34.1	12.5	14	12	4.5	30.1	50
CL 8×6-03	R 3/8	34.1	36.0	13.5	14	14	14	35.0	50	
CL 10×6.5-02	10	R 1/4	33.1	39.1	13.0	17	14	5.0	49.3	50
CL 10×6.5-03		R 3/8	34.1	38.8	13.5	17	14	5.0	49.9	50
CL 10×6.5-04	R 1/2	41.1	39.8	19.0	14	14	14	73.0	25	
CL 10×8-02	10	R 1/4	33.1	39.0	13.0	17	14	6.5	48.3	50
CL 10×8-03		R 3/8	34.1	38.9	13.5	17	14	6.5	48.5	50
CL 10×8-04	R 1/2	41.1	39.8	15.0	14	14	14	72.8	25	
CL 12×8-02	12	R 1/4	33.1	40.0	13.0	19	14	6.5	50.7	50
CL 12×8-03		R 3/8	34.1	40.0	13.5	19	14	6.5	51.9	50
CL 12×8-04	R 1/2	41.1	41.0	19.0	14	14	14	76.6	25	
CL 12×9-02	12	R 1/4	33.1	40.2	13.0	19	14	7.5	50.1	50
CL 12×9-03		R 3/8	34.1	40.1	13.5	19	14	7.5	51.0	50
CL 12×9-04	R 1/2	41.1	41.5	19.0	14	14	14	76.0	25	
CL 16×12-03	16	R 3/8	38.0	38.0	13.5	27	18	10.0	106.8	50
CL 16×12-04		R 1/2	42.0	42.0	15.0	27	18	10.0	119.3	20
CL 16×13-03		R 3/8	38.0	38.0	13.5	27	18	10.0	104.3	50
CL 16×13-04	R 1/2	42.0	42.0	15.0	27	18	10.0	117.5	20	



### INCH-BSPT(R)

MODEL	ØD	T	L	E	A	H1(Hex)	H2(Hex)	ORIFICE	WEIGHT(g)	BOX(EA)
CL 3/16-01	3/16	R 1/8	23.9	30.5	11.0	10	10	2.4	18.0	100
CL 3/16-02		R 1/4	27.4	34.5	12.0	10	12	2.4	28.0	100
CL 1/4-01	1/4	R 1/8	25.4	30.5	11.0	12	10	3.4	20.0	100
CL 1/4-02		R 1/4	28.9	34.5	12.0	12	12	3.4	26.0	50
CL 1/4-03	R 3/8	32.9	38.5	13.0	14	14	14	44.0	50	
CL 5/16-01	5/16	R 1/8	28.9	34.5	11.0	14	12	4.7	30.0	50
CL 5/16-02		R 1/4	29.9	34.5	12.0	14	12	4.7	32.0	50
CL 5/16-03	R 3/8	33.9	38.5	13.0	14	14	14	48.0	50	
CL 3/8-01	3/8	R 1/8	30.9	35.5	11.0	17	12	5.7	35.0	50
CL 3/8-02		R 1/4	31.9	35.5	12.0	17	12	5.7	50.0	50
CL 3/8-03	R 3/8	35.9	38.5	13.0	17	12	5.7	50.0	50	
CL 3/8-04	R 1/4	42.9	39.5	18.0	14	14	14	84.0	25	
CL 1/2-02	1/2	R 1/4	35.9	40.5	12.0	19	14	8.2	50.0	50
CL 1/2-03		R 3/8	36.9	40.5	13.0	19	14	8.2	53.0	50
CL 1/2-04	R 1/2	43.9	43.5	18.0	14	14	14	76.0	25	





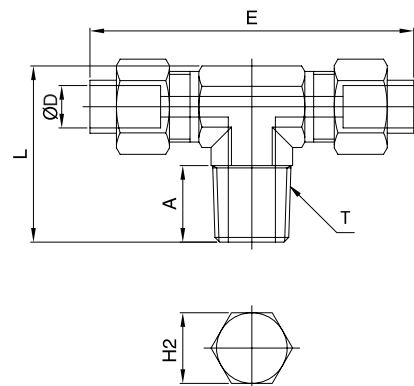
# Two Touch Fitting BSBM

## CT

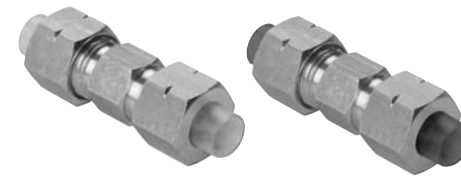


### METRIC-BSPT(R)

MODEL	ØD	T	L	E	A	H1(Hex)	H2(Hex)	ORIFICE	WEIGHT(g)	BOX(EA)
CT 4×2-01	4	R 1/8	23.8	48.2	11.0	10	10	1.0	23.0	50
CT 6×4-01		R 1/8	23.8	47.0	11.0		10	2.5	28.0	50
CT 6×4-02	6	R 1/4	29.9	53.5	13.0	12	12	2.5	40.6	50
CT 6×4-03		R 3/8	34.1	52.0	14.0		14	2.5	43.0	25
CT 8×5-01		R 1/8	26.9	55.6	11.0		12	3.5	41.0	50
CT 8×5-02	8	R 1/4	29.9	55.0	13.0	14	12	3.5	44.0	50
CT 8×5-03		R 3/8	34.1	55.8	14.0		14	3.5	39.0	25
CT 8×6-01		R 1/8	26.9	54.8	11.0		12	4.5	41.0	50
CT 8×6-02	8	R 1/4	29.9	55.4	13.0	14	12	4.5	43.0	50
CT 8×6-03		R 3/8	34.1	54.6	14.0		14	4.5	62.4	25
CT 10×6.5-02		R 1/4	32.1	62.0	13.0		14	5.0	71.0	25
CT 10×6.5-03	10	R 3/8	34.1	61.4	14.0	17	14	5.0	75.0	25
CT 10×8-02		R 1/4	32.1	61.8	13.0		14	6.5	66.0	25
CT 10×8-03	10	R 3/8	34.1	62.5	14.0	17	14	6.5	78.2	25
CT 10×8-04		R 1/2	43.1	68.0	19.0		17.5	6.5	119.2	20
CT 12×8-02		R 1/4	32.1	65.8	13.0		14	6.5	73.0	25
CT 12×8-03	12	R 3/8	34.1	64.5	14.0	19	14	6.5	83.9	25
CT 12×8-04		R 1/2	43.1	70.5	19.0		17.5	6.5	128.7	20
CT 12×9-02		R 1/4	32.1	66.2	13.0		14	7.5	75.0	25
CT 12×9-03	12	R 3/8	34.1	64.0	14.0	19	14	7.5	84.0	25
CT 12×9-04		R 1/2	43.1	68.8	19.0		17.5	7.5	129.0	20

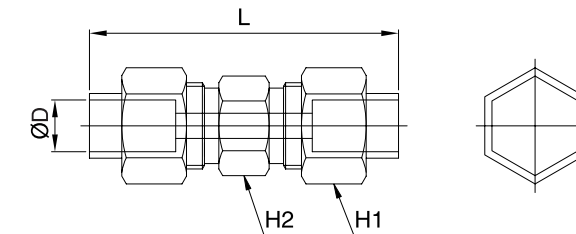


## CUC



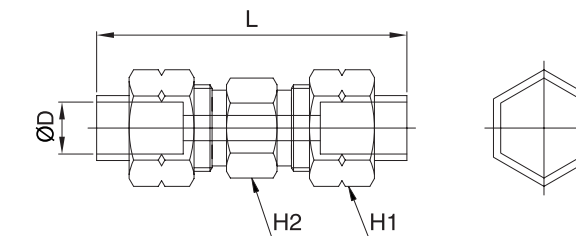
### METRIC-BSPT(R)

MODEL	ØD	L	H1(Hex)	H2(Hex)	ORIFICE	WEIGHT(g)	BOX(EA)
CUC 4×2	4	40.4	10	10	1.0	16.0	100
CUC 6×4	6	40.5	12	10	2.5	19.9	100
CUC 8×5	8	42.8	14	12	3.5	25.4	100
CUC 8×6	8	42.8	14	12	4.5	25.5	50
CUC 10×6.5	10	45.0	17	17	5.0	43.3	50
CUC 10×8	10	44.1	17	17	6.5	42.4	50
CUC 12×8	12	47.2	19	17	6.5	49.0	50
CUC 12×9	12	47.2	19	17	7.5	51.0	50



### INCH-BSPT(R)

MODEL	ØD	L	H1(Hex)	H2(Hex)	ORIFICE	WEIGHT(g)	BOX(EA)
CUC 1/8	1/8	41.8	8	10	1.4	13.0	100
CUC 3/16	3/16	41.8	10	10	2.4	16.0	100
CUC 1/4	1/4	41.8	12	10	3.4	20.0	100
CUC 5/16	5/16	41.8	14	12	4.7	25.0	50
CUC 3/8	3/8	44.8	17	14	5.7	40.0	50
CUC 1/2	1/2	46.8	19	17	8.2	47.0	50

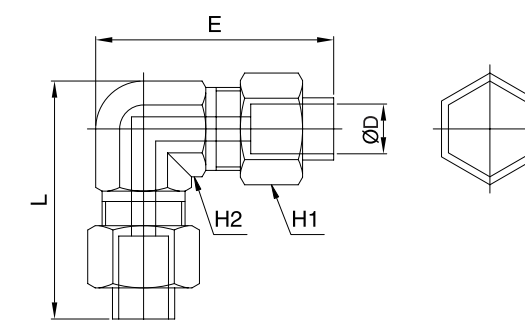


## CUL



### METRIC-BSPT(R)

MODEL	ØD	L	E	H1(Hex)	H2(Hex)	ORIFICE	WEIGHT(g)	BOX(EA)
CUL 4×2	4	29.9	29.9	10	10	1.0	20.0	100
CUL 6×4	6	30.8	30.8	12	10	2.5	25.0	50
CUL 8×5	8	34.7	34.7	14	12	3.5	37.0	50
CUL 8×6	8	34.9	34.9	14	12	4.5	36.0	50
CUL 10×6.5	10	40.1	40.1	17	14	5.0	59.0	50
CUL 10×8	10	40.1	40.1	17	14	6.5	57.0	50
CUL 12×8	12	41.1	41.1	19	14	6.5	63.0	20
CUL 12×9	12	41.1	41.1	19	14	7.5	60.0	20



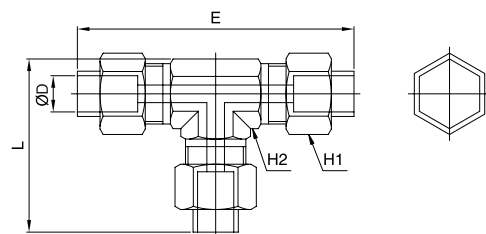
# Two Touch Fitting BSBM

## CUT



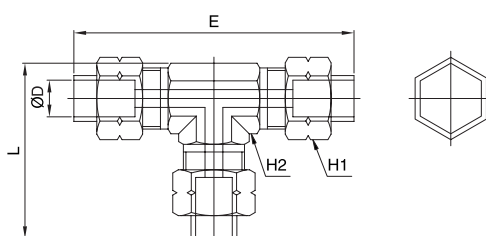
### METRIC-BSPT(R)

MODEL	ØD	L	E	H1(Hex)	H2(Hex)	ORIFICE	WEIGHT(g)	BOX(EA)
CUT 4×2	4	29.9	48.2	10	10	1.0	27.0	50
CUT 6×4	6	30.8	50.0	12	10	2.5	35.8	50
CUT 8×5	8	34.7	55.5	14	12	3.5	49.0	50
CUT 8×6	8	34.9	56.0	14	12	4.5	48.6	50
CUT 10×6.5	10	40.1	64.0	17	14	5.0	83.3	25
CUT 10×8	10	40.1	64.0	17	14	6.5	79.6	25
CUT 12×8	12	41.1	66.0	19	14	6.5	89.3	25
CUT 12×9	12	41.1	66.0	19	14	7.5	85.0	25

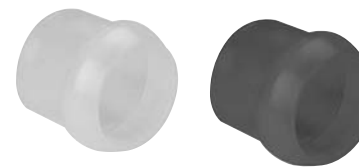


### INCH-BSPT(R)

MODEL	ØD	L	E	H1(Hex)	H2(Hex)	ORIFICE	WEIGHT(g)	BOX(EA)
CUT 1/8	1/8	29.4	49.8	8	10	1.4	22.0	50
CUT 3/16	3/16	30.4	49.8	10	10	2.4	28.0	50
CUT 1/4	1/4	31.9	49.8	12	10	3.4	34.0	50
CUT 5/16	5/16	35.4	54.8	14	12	4.7	49.0	50
CUT 3/8	3/8	38.4	56.8	17	12	5.7	64.0	25
CUT 1/2	1/2	43.9	64.8	19	14	8.2	84.0	25

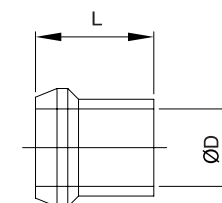


## CSN



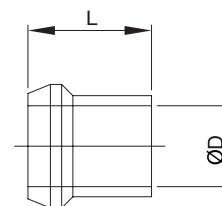
### METRIC

MODEL	ØD	L	BOX(EA)
CSN 04	4	11.0	400
CSN 06	6	11.0	400
CSN 08	8	11.0	400
CSN 10	10	12.0	400
CSN 12	12	13.5	400
CSN 16	16	17.5	400

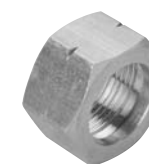


### INCH

MODEL	ØD	L	BOX(EA)
CSN 1/8	1/8	11.0	400
CSN 3/16	3/16	11.0	400
CSN 1/4	1/4	11.0	400
CSN 5/16	5/16	11.0	400
CSN 3/8	3/8	12.0	400
CSN 1/2	1/2	13.0	400

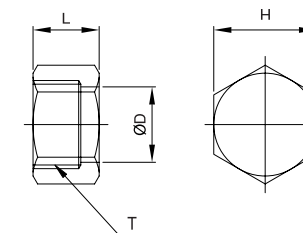


## NUT



### METRIC

MODEL	ØD	L	T	H(Hex)	WEIGHT(g)	BOX(EA)
NUT 04	4	9.0	M8×0.75p	10	3.4	100
NUT 06	6	9.0	M10×1.0p	12	4.5	100
NUT 08	8	9.0	M12×1.0p	14	5.5	100
NUT 10	10	10.0	M15×1.0p	17	8.8	100
NUT 12	12	11.0	M17×1.0p	19	10.4	100
NUT 16	16	13.0	M22×1.0p	27	31.2	100



### INCH

MODEL	ØD	L	T	H(Hex)	WEIGHT(g)	BOX(EA)
NUT 1/8	1/8	9.0	M6×0.75p	8	3.0	100
NUT 3/16	3/16	9.0	M6×0.75p	10	4.0	100
NUT 1/4	1/4	9.0	M10×1.0p	12	5.0	100
NUT 5/16	5/16	9.0	M12×1.0p	14	6.0	100
NUT 3/8	3/8	10.0	M14×1.0p	17	10.0	100
NUT 1/2	1/2	11.5	M17×1.0p	19	11.0	100

