

## K系列 氣動鋼珠式振動器 K Series pneumatic ball vibrator

### 產品說明 /Feature

#### ● 產品特點 Product Features

振動力度可以根據氣壓大小調節,價格實惠.使用壽命優.安全.可應用在潮溼.粉塵及防報場所  
Vibration intensity according to the pressure regulator, affordable, long life, safe, can be used in damp, dust and explosion sites.

#### ● 產品應用 Application

物料輸送.振動篩選.料斗振動.包裝振動填入.鑄造砂磨振動  
Feed material conveyor, vibrating screening, vibrating hopper, to help fill packaging, foundry sand mold vibration.

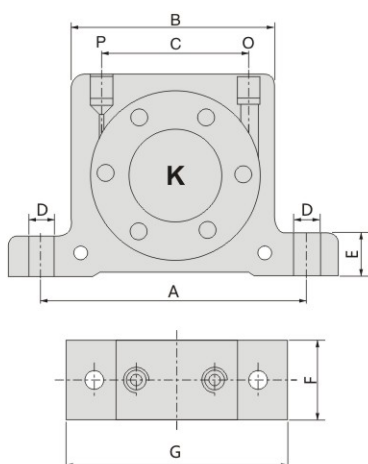
#### ● 工作原理 Works

裝置有鋼螺套及鋼珠.外經鋁合金殼密閉.利用空氣充入推動迴轉中的鋼珠重量與中心區之間的距離.而產生離心力振動  
Means of precision steel sleeve and the ball, the outer shell sealed by a special aluminum alloy, to promote the use of air charged into the rotary sleeve in the steel ball weigh ball and the distance between the center of the centrifugal force generated vibration.

### 技術參數/Technical parameters

| 型號 Type | 頻率 Frequency(V.P.M) |        |        | 振動力 Vibration power(N) |        |        | 空氣消耗量 Air consumption(/min) |             |        |
|---------|---------------------|--------|--------|------------------------|--------|--------|-----------------------------|-------------|--------|
|         | 0.2Mpa              | 0.4Mpa | 0.6Mpa | 0.2Mpa                 | 0.4Mpa | 0.6Mpa | 0.2Mpa                      | 0.4Mpa      | 0.6Mpa |
| K-8     | 22500               | 27250  | 34100  | 245                    | 465    | 700    | 90                          | 150         | 190    |
| K-10    | 22500               | 27250  | 34100  | 245                    | 465    | 700    | 90                          | 150         | 190    |
| K-13    | 13250               | 17500  | 19000  | 440                    | 820    | 1.200  | 100                         | 190         | 270    |
| K-16    | 13250               | 17500  | 19000  | 440                    | 820    | 1.200  | 100                         | 190         | 270    |
| K-20    | 10000               | 12750  | 14111  | 950                    | 1.675  | 2.000  | 150                         | 270         | 400    |
| K-25    | 10000               | 12750  | 14111  | 950                    | 1.675  | 2.000  | 150                         | 270 <td 400 |        |
| K-32    | 7500                | 9350   | 11000  | 2000                   | 3.150  | 4.000  | 270                         | 460         | 680    |
| K-36    | 7500                | 9350   | 11000  | 2000                   | 3.150  | 4.000  | 270                         | 460         | 680    |

### 外型尺寸/Dimensions



| 型號 Type | A   | B   | C  | D  | E  | F  | G   | P/O | 重量 Weight(g) |
|---------|-----|-----|----|----|----|----|-----|-----|--------------|
| K-8     | 68  | 50  | 28 | 7  | 12 | 22 | 86  | 1/4 | 150          |
| K-10    | 68  | 50  | 28 | 7  | 12 | 22 | 86  | 1/4 | 150          |
| K-13    | 90  | 65  | 39 | 9  | 16 | 27 | 113 | 1/4 | 330          |
| K-16    | 90  | 65  | 39 | 9  | 16 | 27 | 113 | 1/4 | 330          |
| K-20    | 104 | 82  | 57 | 9  | 17 | 38 | 128 | 1/4 | 690          |
| K-25    | 104 | 82  | 57 | 9  | 17 | 38 | 128 | 1/4 | 690          |
| K-32    | 130 | 103 | 76 | 11 | 21 | 50 | 160 | 3/8 | 1320         |
| K-36    | 130 | 103 | 76 | 11 | 21 | 50 | 160 | 3/8 | 1320         |