

FP-M 系列活塞式振動器 FP-M Series Piston Type Pneumatic Hamm

產品說明/Feature

● 產品特點 Product Features

振動力度可靠氣壓大小調整.可立即啓動.停止.速度快
低噪音.振動力大.安全

Vibration intensity can be adjusted based on air pressure,
can immediately start, stop, fast, low-noise, vibration force,
security.

● 產品應用 Application

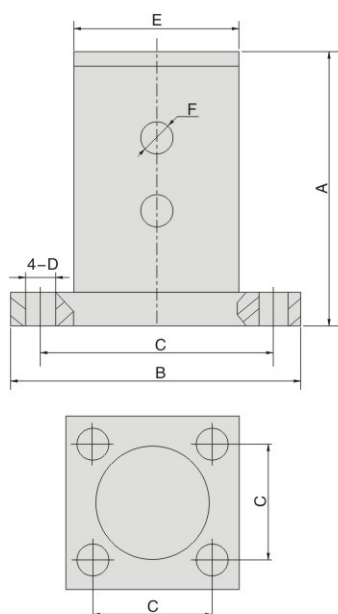
物料輸送.振動篩選.料斗振動.包裝填入.鑄造砂磨振動
Feed material conveyor, vibrating screening, vibrating
hopper, to help fill packaging, foundry sand mold vibration.



技術參數/Technical parameters

型號 Type	振動力 Vibration power(N)			頻率 Frequency (V.P.M)	耗氣量 (l/min)
	3MPa	4MPa	6MPa		
FP-32-M	480	710	900	10-60	215
FP-40-M	630	970	1100	10-50	255
FP-50-M	710	1000	1300	10-40	275
FP-60-M	920	1200	1890	10-30	315
FP-80-M	1080	1920	2400	10-25	335

外型尺寸/Dimensions



型號 Type	A	B	C	D	E	F
FP-32-M	90	70	47	8	57	G1/8"
FP-40-M	125	80	47	8	60	G1/8"
FP-50-M	139	94	54	10	68	G1/4"
FP-60-M	187	120	67	10	92	G3/8"
FP-80-M	192	115	82	13	114	G3/8"

FP-M 系列活塞振動器 FP-M Series Piston Type Pneumatic Hamm

產品說明/Feature

● 產品特點 Product Features

功率大,少量潤滑,安靜
 標準頻率10-60次/分鐘
 振動力484-13800牛頓
 頻率及振幅連續可調(氣壓調節)
 最高使用溫度:150°C
 可使用於極端惡劣環境
 註:高溫200度可訂置處理

Big power with lower noise
 Standard frequency is from 10 to 60 times per minute.
 Excitation force is from 484 N to 13800 N
 The frequency and vibration amplitude can be adjusted via regulating the working pressure.
 The normal maximum working pressure is 150 degrees centigrade.
 (We can also make special type, such as 200 degrees centigrade).
 The pneumatic hammer can be used for severe environment.

● 產品應用 Application

振動台, 過濾篩, 料倉清空, 散了的振散及拍實, 防止管路剩料掛壁, 趨動書裝置及洩料槽
 Hopper feed, Casting industry, Pipelining, Compaction, Screening, Conveyor, etc

技術參數/Technical parameters

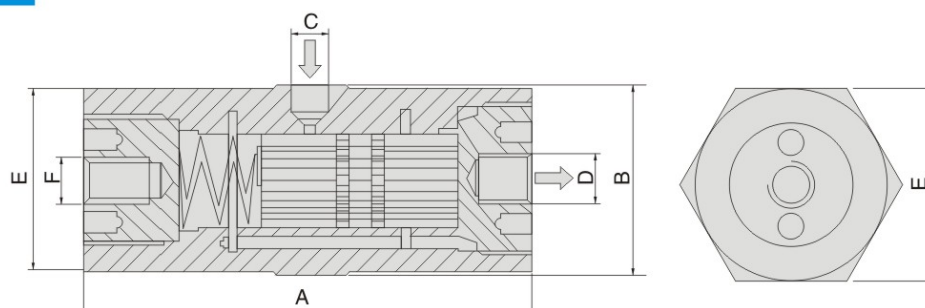
型號 Type	每分鐘振動次數 Frequency×1000		振動力 Vibration power(N)		空氣消耗量 Air consumption (/min)		A	C	D	E	F
	2 bars	6 bars	2 bars	6 bars	2 bars	6 bars	長度Length mm	進氣 Inlet	螺紋 Thread	SW mm	排氣 Outlet
FP-12-M	5	6.7	34	74	0.5	19	81	1/8"	M-8	34	1/8"
FP-18-M	4	5.9	68	188	4	52	94	1/8"	M-10	42	1/8"
FP-25-M	3	4.2	142	504	23	87	99	1/8"	M-12	50	1/4"
FP-35-M	3	4.6	248	1080	24	141	109	1/4"	M-12	65	1/4"

結構/Structure

鋁製本體, 抗腐蝕, 含有特殊潤滑脂
 Aluminum shell with special high grade grease, long lifetime, is suitable for different application situation

外形尺寸/Dimensions

表面陽級硬化處理本體
 活塞由青銅製成
 彈簧鋼啟動裝置
 吸音排氣系統
 陽極氧化硬鋁底座
 內螺紋安裝孔
 Aluminum shell and base
 Lead bronze piston
 Steel spring for starting equipment
 Noise reducing and exhausting system
 Female thread hole for installing



具有振幅和頻率可調

The frequency and vibration amplitude is adjustable