



## Regulator G 3/8, G 1/2

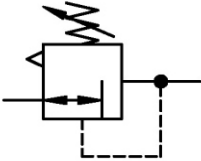
type	DR.32	DR.33	
item			
port size	G 3/8	G 1/2	
description	air line regulator with diaphragm and relieving feature		
mounting	arbitrary		
supply pressure	Pe max. 35 bar		
reduced pressure	Pa 0,5-10 bar standard, 0,5-3 bar, 0,5-6 bar, 0,5-16 bar		
media and ambient			
temperature	max. 80°C (oth. temperature ranges available upon request)		
fixing	panel mounting, bracket		
weight	1,300 kg, (1,200 kg without gauge)		



**replacement parts** (repair kit: ESA-DR.33)

no	description	material	order-no
1	body	zinc - Z 410	---
2	spring cage DR.33-37	zinc - Z 410	---
3	diaphragm	NBR - Ms	
4	valve cone	NBR - Ms	
5	regulat. spring DR.33-11	St. - galvanized	5.1533.11.000
6	spring DR.33-28	niro	5.1533.28.000

**application information**



**series 3**

**ordering information**

DR. **\*\*** **\*** **\***

type    reduced pressure

1 port size  2 option

**ordering example: DR.33 G 0,5-3**

port size	
1	32 G 3/8
	33 G 1/2
<b>options</b>	
G	gauge ø63
	panel mounting
2	





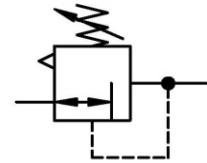
## Regulator G<sup>3/4</sup>, G 1

item	type	DR.34	DR.35
port size		G 3/4	G 1
description air line regulator with diaphragm and relieving feature			
mounting arbitrary			
supply pressure Pe max. 35 bar			
reduced pressure Pa 0,5-10 bar standard, 0,5-3 bar, 0,5-6 bar, 0,5-16 bar			
media and ambient			
temperature max. 80°C (oth. temperature ranges available upon request)			
fixing panel mounting, bracket			
weight 1,300 kg, (1,200 kg without gauge)			



**replacement parts** ☞ (repair kit: ESA-DR.33)

no	description	material	order-no.
1	body	zinc - Z 410	---
2	spring cage DR.33-2	zinc - Z 410	---
3	diaphragm assembly	NBR - Ms	
4	regul. spring 0-10 bar DR.33-11	St.- galvanized	5.1533.11.000
5	valve cone	NBR - Ms	
6	spring DR.33-28	niro	5.1533.28.000



### series 3

### ordering information

DR. \*\* \* \*  
 type     reduced pressure  
 1 port size  2 option

ordering example: DR.35 G 0,5-3

port size	
1	34 G 3/4
	35 G 1
2	<b>options</b>
	G gauge ø63
	S panel mounting

### application information

