

# Check Valves



## Fitting Series

- One-Touch Fittings
- Compact One-Touch Fittings
- Speed Controllers
- Hand Valves
- Stop Fittings
- Check Valves
- Two-Touch Fittings
- Two-Touch Fittings BSBM

## METRIC-BSPT(R)



## METRIC-BSPP(G)



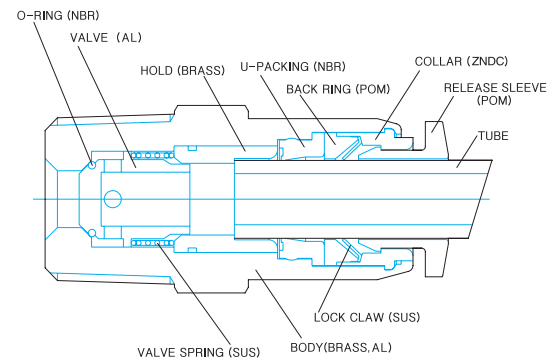
O
C
S
H
S
C
T
S
T
A
O
C
T

- Applications
- Used in places where air should flow in one direction only.
  - Used in places where the air pressure of the ventilation section should be kept uniform.
  - Good for low pressure devices.

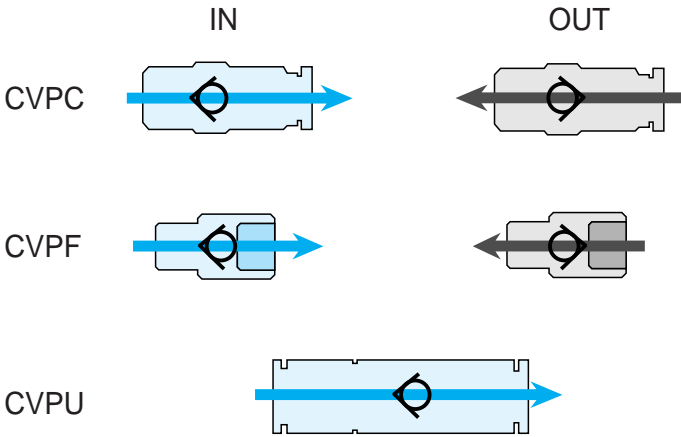
- Features
- Suitable for low pressure applications.
  - This valve allows compressed air from one side flow and blocks the inverse flow to protect and maintain the vacuum line and is easily applied to low pressure piping.

- Specifications
- Fluid type : Air(No other gases or liquids)
  - Working pressure: 0~150PSI / 0~9.9Kgf/cm<sup>2</sup>(0~990kPa)
  - Negative pressure : -29.5 in Hg / -750mmHg(-750Torr)
  - Working temperature: 32~140° F / 0~60° C
  - Applicable Tube: Polyurethane and Nylon

Structural Diagram



Applied example



- CAUTION**
- Be sure to refer to Caution on Safety, Classification of Warning Indications (P7), and Common Caution of Fitting Products (P8) before use.
  - Assemble the fitting according to the proper connection torque value (P7).
  - Proper torque refer to connection by hand and 2~3 rotations using a tool. Excessive pressure may damage the screw.

- WARNING**
- Do not force impact or rotation on the body or fitting section.
  - The main body may heat due to too many transfer operations, and it may burn.

Product Code System

METRIC - BSPT(R)			
CVPC 08-01			
CHECK VALVES	Tube Dia	Thread Size	Sleeve color
CODE	φD	CODE	SIZE
04	φ4	M5	M5×0.8
06	φ6	01	R1/8
08	φ8	02	R1/4
10	φ10	03	R3/8
12	φ12	04	R1/2

METRIC - BSPP(G)			
CVPC 08-G1			
CHECK VALVES	Tube Dia	Thread Size	Sleeve color
CODE	φD	CODE	SIZE
04	φ4	G01	G1/8
06	φ6	G02	G1/4
08	φ8	G03	G3/8
10	φ10	G04	G1/2
12	φ12		

INCH - NPT			
CVPC 5/16-N1			
CHECK VALVES	Tube Dia	Thread Size	Sleeve color
CODE	SIZE	CODE	SIZE
1/4	1/4"	N1	NPT1/8
5/16	5/16"	N2	NPT1/4
3/8	3/8"	N3	NPT3/8
1/2	1/2"	N4	NPT1/2

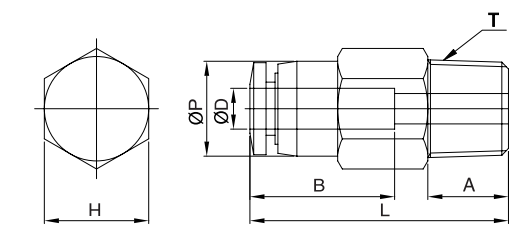
Check Valves

CVPC



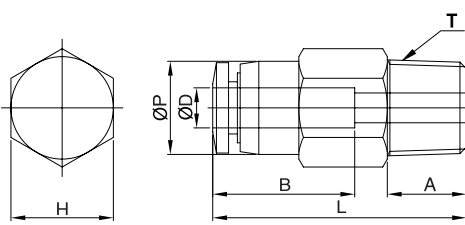
METRIC-BSPT(R)

MODEL	ØD	ØP	T	L	A	B	H(Hex)	WEIGHT(g)	BOX(EA)
CVPC 04-M5	4	10.0	M5×0.8p	31.4	3.6	15.3	10	11.8	100
CVPC 04-M6			M6×1.0p	30.4	4.6	15.3	10	11.8	100
CVPC 04-01	6	11.9	R1/8	27.3	8.0	15.3	10	9.8	100
CVPC 06-01			R1/8	32.6	8.0	16.3	12	12.8	100
CVPC 06-02	8	14.0	R1/4	32.6	10.0	16.3	14	19.8	50
CVPC 08-01			R1/8	34.9	8.0	18.3	14	18.7	50
CVPC 08-02	10	23.0	R1/4	37.2	10.0	18.3	14	20.7	50
CVPC 10-03			R3/8	56.3	11.0	20.3	22	45.5	25
CVPC 10-04	12	25.0	R1/2	58.3	14.0	20.3	22	63.5	25
CVPC 12-03			R3/8	62.3	12.0	23.3	24	48.3	20
CVPC 12-04			R1/2	65.3	14.0	23.3	24	68.3	20



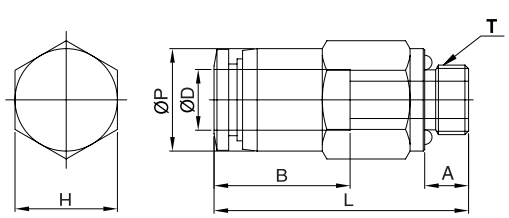
INCH-NPT

MODEL	ØD	ØP	T	L	A	B	H(Hex)	WEIGHT(g)	BOX(EA)
CVFC5/32-U	5/32	10.0	UNF10/32	31.4	3.6	15.3	3/8	11.8	100
CVFC5/32-N1			NPT1/8	27.3	8.5	15.3	7/16	10.8	100
CVFC3/16-U	3/16	11.0	UNF10/32	32.5	3.6	16.4	7/16	11.8	100
CVFC3/16-N1			NPT1/8	28.4	8.5	16.4	7/16	13.8	100
CVFC3/16-N2			NPT1/4	28.4	10.5	16.4	9/16	19.8	100
CVFC1/4-N1	1/4	12.7	NPT1/8	33.0	8.5	17.4	1/2	17.8	100
CVFC1/4-N2			NPT1/4	33.0	10.5	17.4	9/16	21.8	50
CVFC5/16-N1	5/16	14.0	NPT1/8	34.9	8.5	18.6	9/16	20.7	50
CVFC5/16-N2			NPT1/4	37.2	11.5	18.6	9/16	22.7	50
CVFC3/8-N3	3/8	23.0	NPT3/8	56.3	11.5	20.3	7/8	45.4	20
CVFC3/8-N4			NPT1/2	58.3	14.5	20.3	7/8	63.4	20
CVFC1/2-N3	1/2	25.0	NPT3/8	62.5	12.5	23.5	15/16	48.1	20
CVFC1/2-N4			NPT1/2	65.5	14.5	23.5	15/16	68.1	20

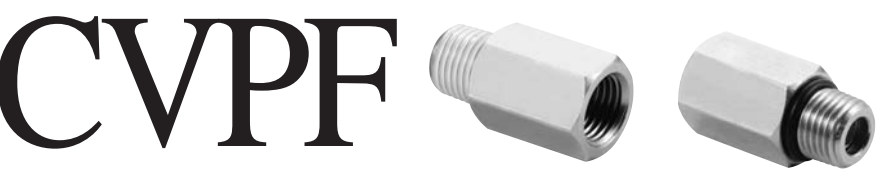


METRIC-BSPP(G)

MODEL	ØD	ØP	T	L	A	B	H(Hex)	WEIGHT(g)	BOX(EA)
CVFC04-G01	4	10.0	G1/8	26.3	5.0	15.3	10	11.8	100
CVFC06-G01	6	11.9	G1/8	31.6	5.0	17.0	12	15.8	100
CVFC06-G02	6	11.9	G1/4	32.1	6.5	17.0	15	25.8	50
CVFC08-G01	8	14.0	G1/8	33.8	5.0	18.6	14	16.7	50
CVFC08-G02	8	14.0	G1/4	36.7	6.5	18.6	15	25.7	50
CVFC10-G03	10	23.0	G3/8	52.5	6.5	20.3	22	33.5	20
CVFC10-G04	10	23.0	G1/2	54.3	8.0	20.3	24	39.5	20
CVFC12-G03	12	25.0	G3/8	57.5	6.5	23.3	24	41.3	20
CVFC12-G04	12	25.0	G1/2	59.3	8.0	23.3	24	44.3	20



Check Valves

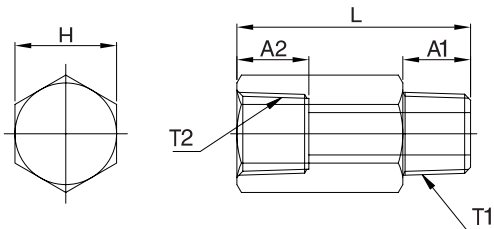


Check Valves



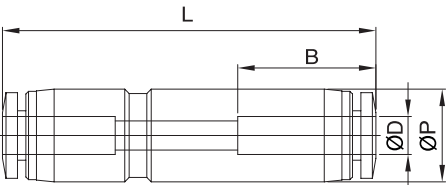
BSPT(R) - BSPT(R)

MODEL	T1	T2	L	A1	A2	H(Hex)	WEIGHT(g)	BOX(EA)
CVPF 01-01	R1/8	Rc1/8	28.1	8.0	8.0	12	16.0	100
CVPF 02-02	R1/4	Rc1/4	34.1	11.0	11.0	17	39.0	50
CVPF 03-03	R3/8	Rc3/8	53.8	12.0	12.0	22	107.0	25
CVPF 04-04	R1/2	Rc1/2	61.0	14.0	14.0	24	130.0	25



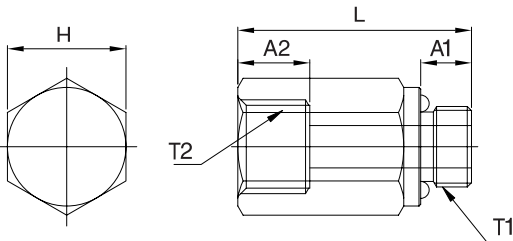
METRIC

MODEL	ØD	ØP	L	B	WEIGHT(g)	BOX(EA)
CVPU 04	4	10.5	423	15.7	5.6	100
CVPU 06	6	12.5	475	17.0	8.4	100
CVPU 08	8	14.8	564	19.1	13.4	50
CVPU 10	10	23.0	652	20.3	16.4	25
CVPU 12	12	25.0	730	23.3	31.2	25



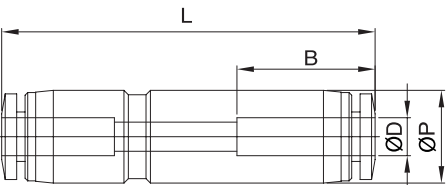
BSPP(G) - BSPP(G)

MODEL	T1	T2	L	A1	A2	H(Hex)	WEIGHT(g)	BOX(EA)
CVFPG01-G01	G1/8	G1/8	26.6	5.0	8.0	14	24.0	100
CVFPG02-G02	G1/4	G1/4	33.1	6.5	10.0	17	40.0	100
CVFPG03-G03	G3/8	G3/8	49.0	6.5	11.0	22	102.0	25
CVFPG04-G04	G1/2	G1/2	55.7	8.0	14.0	24	121.0	25



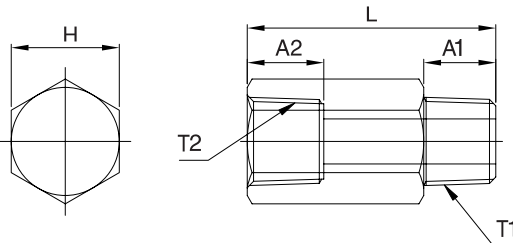
INCH

MODEL	ØD	ØP	L	B	WEIGHT(g)	BOX(EA)
CVPU 5/32	5/32	10.5	423	15.7	5.6	100
CVPU 3/16	3/16	11.5	442	16.9	7.4	100
CVPU 1/4	1/4	13.0	484	17.4	8.4	50
CVPU 5/16	5/16	14.8	564	19.1	13.4	50
CVPU 3/8	3/8	23.0	653	20.3	43.4	25
CVPU 1/2	1/2	25.0	734	23.5	58.0	25



NPT - NPT

MODEL	T1	T2	L	A1	A2	H(Hex)	WEIGHT(g)	BOX(EA)
CVPFN1-N1	NPT1/8	NPT1/8	28.1	8.5	8.5	1/2	19.0	100
CVPFN2-N2	NPT1/4	NPT1/4	34.1	10.5	10.5	11/16	40.0	50
CVPFN3-N3	NPT3/8	NPT3/8	53.8	12.5	11.5	7/8	110.0	25
CVPFN4-N4	NPT1/2	NPT1/2	61.0	14.5	14.5	15/16	135.0	25



O
C
S
H
S
C
T
S
T
A
O
C
T